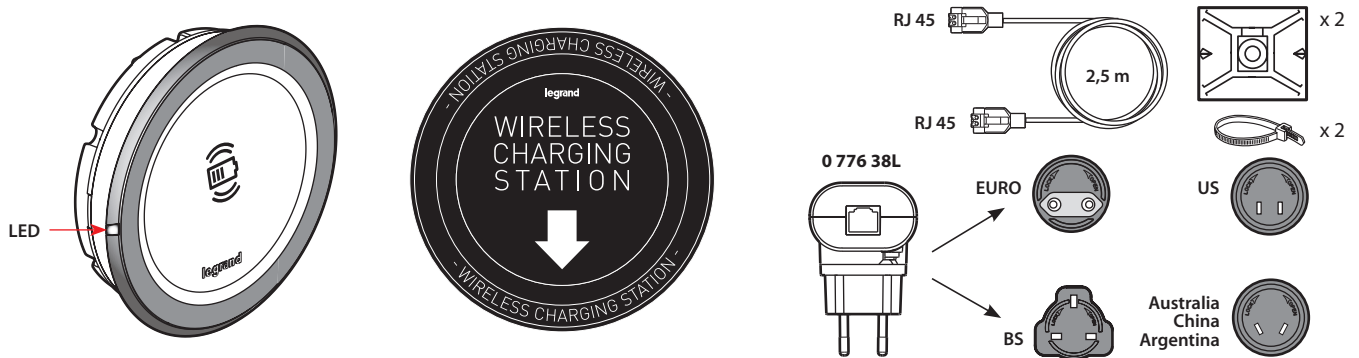


# Mosaic™ 15 W wireless charger for furniture

Cat. No(s): 0 776 40L



### 1. USE



Can be used to fully charge or top up a smartphone equipped with an induction receiver.

Designed for mounting horizontally on furniture.

Suitable for use in passageways or transit areas, offices, on kitchen worktops.

Does not interfere with other wireless transmissions (Zigbee, TNT, GSM, 4G, etc).

Product supplied with:

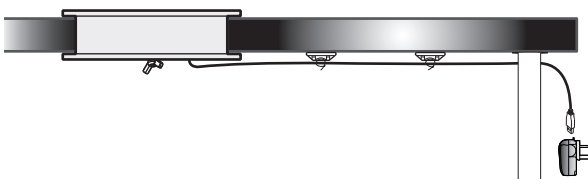
- accessory for fixing on furniture
- RJ45/RJ45\* cord (2.50 m)
- 2 adhesive bases + 2 cable ties
- identification sticker for use in public spaces.
- 4 plugs: 2P Euro / BS / US / Australia-China-Argentina.
- mobile power cat. no. 0 776 38L (110-240 V~ - Power 25.0 W).

\*Compatible with RJ45 cord. Cat 5 or Cat. 6 length 0.5 to 10 m.

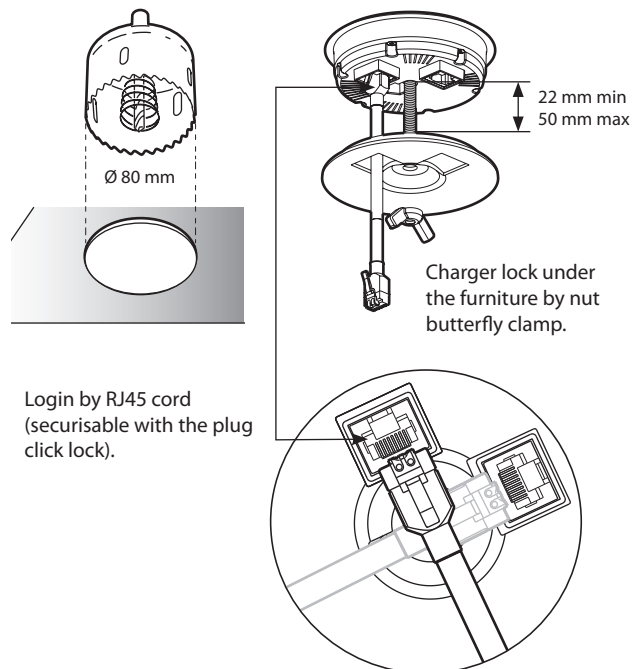
### 2. RANGE

Description	Cat. No.
Wireless charger equipped with an 8 cm <sup>2</sup> induction type antenna for quick pairing with the smartphone. Surface with non-slip coating to hold the terminal safely in place during charging.	0 776 40L

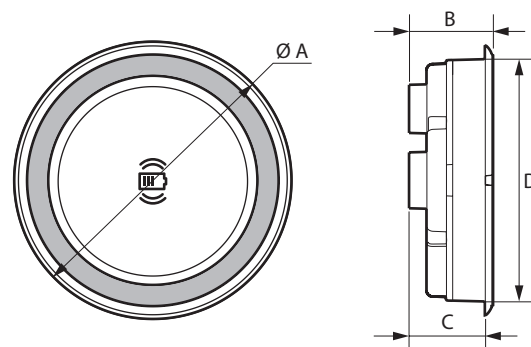
### 3. MOUNTING



### 3. MOUNTING (continued)



### 4. DIMENSIONS (mm)



Ø A	B	C	D
87	27	24.5	77.5

## 5. TECHNICAL CHARACTERISTICS

### ■ 5.1 Mechanical characteristics

Impact resistance: IK 08  
 Resistance to ingress of solid bodies and liquids:  
 IP44 for upper part installed on furniture

### ■ 5.2 Material characteristics

Wireless charger: ABS  
 Strapping chromed  
 No-slip coating  
 Halogen-free  
 UV-resistant

Self-extinguishing:  
 850°C/30 s for insulating components holding live parts in place  
 650°C/30 s for other insulating components

### ■ 5.3 Electrical characteristics

#### • Charger

Nominal input voltage	48.0 V
Connection	RJ 45 cord
Input current	0.5 A
Power	15.0 W
Standby consumption	0.01 A
Energy efficiency	> 75 %
Protection class	II - Low voltage

#### • LED indication

Indication	Red LED	Green LED
Power ON (Once plug-in)	Flash 3 times (bright 0.5 s)	OFF
Standby	OFF	OFF
Charging on progress	ON	OFF
Charge complete	OFF	ON
Charging error/FOD detection*	Fast flashing	OFF

\* Ex.: protective back cover not compatible

\* Insufficient smartphone alignment

\* Incompatible wireless charging accessory (not Qi certified)

#### • 25 W power supply

Nominal input voltage	110-240 V~
Frequency	50/60 Hz
Nominal input current	0.6 A
Nominal output current	0.52 A
Power	25.0 W
Standby consumption	0.07 W
Energy efficiency	> 75 %
Protection class	II - Low voltage

### ■ 5.4 Average charging time for a smartphone equipped with an induction receive

- 80 % charge < 1:00
- 100 % charge < 1:30

### ■ 5.5 Climate characteristics

Storage temperature: - 20°C to +70°C  
 Usage temperature: 0°C to +40°C

## 6. CLEANING

Surface cleaning with a cloth.  
 Do not use acetone, tar remover, trichloroethylene..  
 Suitable for cleaning using usual detergents, hydroalcoholic gels.  
 Resists soiling such as coffee and soda.

**Caution:** Always test before using other special cleaning product.

## 7. STANDARDS AND APPROVALS



WPC Qi

Compliant with installation and manufacturing standards.  
 See e.catalogue.